

NOTE TO SUPPLIER: REPEAT PAGE IS USED

COMMERCIAL AND AGRICULTURAL CLASS.  
READ LABEL AND ATTACHED  
PACKAGING LEAFLET BEFORE USING.

KEEP LOCKED OUT  
OF REACH OF CHILDREN.  
WEKA MBALI NA WATOTO.

KUNDI LA BIAHARA NA KILIMO.  
SOMA MAELEZO YOTE KWENYE FURUSI NA  
UKURUSA ULIOBANDIKWA  
KWA FURUSI.

**Shelf Life:** 2 years from date of manufacture in  
original unopened containers, stored in a cool  
dry place.

**Maisha rafuni:** miaka miwili kuanzia siku ya  
kutengenezwa ikiwa imehifadhiwa, katika vi-  
wekeo vyake asili ambavyo havijafunguliwa.

**In case of an emergency Call Toll free No.:**  
0800 720 021 / 0800 730 030 (24 hr).

**Kukiwa na jambo la dharura piga simu isio-  
tozwa nambari:** 0800 720 021 / 0800 730 030  
(masaa 24).

® Registered Trademark  
of a Syngenta Group Company  
® Alama ya biashara ya kampuni ya Syngenta

**Manufacturer: / Watengenezaji:**  
Syngenta Crop Protection AG  
Basle, Switzerland

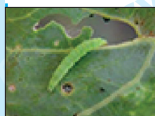
**Distributor: / Wauzaji:**  
**Syngenta East Africa Ltd.**  
P.O. Box 30393  
00100 Nairobi, Kenya  
Tel.: 254-0703018000/9000  
Fax: 254-020-3007885



L1008523 KENY/03T PPE 4050248

# Match<sup>®</sup> 050EC

syngenta



**Insecticide for the control of  
diamondback moth larvae (*Plu-  
tella xylostella*) on kales, Cater-  
pillars (*Spodoptera exigua*) and  
Thrips on Roses.**

**Kiuadudu ya kudhibiti larvae ya diamon-  
back moth (*Plutella xylostella*) kwenye suku-  
ma wiki, Caterpillars (*Spodoptera exigua*) na  
thrips kwenye maua ya roses.**

**FLAMMABLE  
HUSHIKA MOTO**



**Guarantee: / Dhamana:** Lufenuron 50 g/lit.

**REGISTRATION NO. / NAMBARI YA KUSAJI-  
LIWA:** PCPB(CR) 0269

**Net Content: 1 Litre  
Ujazo: Lita 1**

Product names marked ® or TM, the ALLIANCE FRAME  
the SYNGENTA Logo and the PURPOSE ICON<sup>™</sup>  
are Trademarks of a Syngenta Group Company



750ml

500ml

250ml

approx. measure

Please remove before printing.  
Retirez s'il vous plaît avant l'impression  
Por favor, eliminar antes de imprimir.

S-PAC

DESCRIPTION:  
BOOKLET 4-16 PG 275 x 122 MM

SCALE:  
1:1

ISSUE NO:  
SYN002

ISSUE DATE:  
24,10,2014

4032223

**Emulsifiable concentrate.**

**Insecticide for the control of diamondback moth larvae (*Plutella xylostella*) on kales, Caterpillars (*Spodoptera exigua*) and Thrips on Roses.**

**Mode of Action:**

Match® 050 EC is a larvicide acting by inhibition of chitin biosynthesis, thus interfering with the formation of the cuticle. It is non-systemic but displays strong stomach and moderate contact activity. Match® 050 EC is effective on pests resistant to organophosphates and pyrethroids.

**Spectrum of Activity:**

Match® 050 EC is highly effective against leaf feeding lepidopterous and coleopterous larvae. It also exhibits ovicidal activity. It is active on larval stages of Western flower thrips (*Frankliniella occidentalis*).

**Direction for use**

Crop	Pest	Rate/100 lt. water	PHI (days)
Kales	Diamondback moth	60-80 ml	14
Roses	Caterpillars	60-80 ml	
	Thrips	2 lt./ha	

In a 20 litre knapsack sprayer use 25 ml (using 500 litres/ha water volume) and 40 ml using 300 lt./ha water volume.

**Pre-Harvest Interval:** Kales: 14 days.

**Mixing:**Add the measured quantity of concentrate to clean water in the half-filled spray tank. Maintain agitation while topping up. Always stir the spray mixture well and apply within a few hours. Prepare no more spray mixture than is needed for the immediate operation.

**Application timing:**

Start treatment when the economic threshold is reached and repeat as necessary.

**Note:** DO NOT overdose by overlapping applications or by exceeding the recommended rate.

**Spray interval:**

Observe a spray interval of 7-10 days. Use the shorter spray interval in cases of heavy pest infestation. Apply a maximum of 6 sprays per season, then rotate with products with a different mode of action, e.g., Pegasus® for diamond backmoth control.

**Crop Tolerance:**

When used as recommended Match® 050 EC is well tolerated by all crops it is recommended to be used on. In case of sensitive or new varieties, check crop tolerance first.

**IPM-Fitness:**

Monitor beneficials and pests and use local thresholds. If several treatments are required against the same pest, use alternate products with different modes of action. Match® 050 EC is safe to adult stages of predators. It is safe to predatory mites.

**Application Information:**

All equipment has to be properly calibrated before use with regard to forward speed, flow rate, to ensure thorough and even coverage of the whole plant, in particular also of the lower plant parts. Avoid spray drifts to non-target sites. DO NOT spray when wind speed is higher than 5 m/s. DO NOT spray during the hot hours of the day, or if foliage is wet or rain is imminent within 2 hours. A re-entry period in the sprayed areas of 12 hours should be observed.

**Ground application:**

Match® 050 EC can be applied with tractor boom sprayers, knapsack sprayers or portable mistblowers. For vegetables planted in individual rows spray over the top to minimise soil contamination. Adjust the spray volume to the size and volume of the crop, and do not spray over the run-off point. Keep your walking speed steady

when using portable equipment. With portable mistblowers run the engine always at full speed for best droplet formation.

With tractorised mistblowers use hollow cone or flat fan nozzles equipped with respective filters at a pressure of 5-10 bars.

With knapsack sprayers use hollow cone nozzles at a pressure of 2-5 bars.

**Spray volumes**

Tractorised mistblowers:	150-500 lt./ha
Portable mistblowers:	50-150 lt./ha
Knapsack sprayers:	300-500 lt./ha.

**Protected crops in glasshouses and under plastic:**

Match® 050 EC can be applied with spray guns, horizontal and vertical boom sprayers or knapsack sprayer. In view of the dense crops, care should be taken to achieve thorough coverage of all foliage especially the lower plant parts. Spray volumes between 500-1500 lt./ha are recommended.

**Storage:** Store away from sun and damp, in a cool dry place. Store in original tightly closed containers in a well-ventilated area. Avoid storage above 35°C or below -10°C. Store under lock and key, away from foodstuffs, drinking water, animal feeds, children, animals and unauthorised persons.

**Hazards and Precautions**

**Precautionary measures**

KEEP LOCKED UP OUT OF REACH OF CHILDREN and other unauthorised persons and animals.

**Operator Safety:** AVOID contact with concentrate or spray mixture on skin, eyes or clothing. DO NOT breathe spray mist. DO NOT eat, drink or smoke while handling the product, wash hands and face before doing so. If any disposition occurs, stop work, follow first aid measures, and call a physician.

WEAR protective clothing, i.e., for mixing/loading: impermeable gloves, face mask; for application wear overalls, hat or cap; facemask, gumboots and impermeable gloves. IF CONTAMINATION OCCURS with concentrate or spray mixture, immediately wash skin thoroughly, flush eyes several times with abundant fresh water, and remove contaminated clothing. AFTER USE, thoroughly clean protective clothing and wash entire body and change clothing. Wash contaminated clothing before re-use.

**Environment and wildlife:**

TOXIC TO FISH and other aquatic organisms. DO NOT contaminate water used for irrigation or domestic purposes and water sources, such as ponds, ditches, lakes, drainage systems, etc. Slightly toxic to bees. DO NOT spray when bees are actively foraging in the area.

Newly treated areas must not be grazed and all livestock is to be kept out; no food or feed should be collected from treated areas for a period corresponding to the pre-harvest interval.

**Product and Container Disposal:**

Dispose of surplus product on a landfill site approved for pesticides, or divide remainder into small quantities and bury in a safe place away from water sources. Dilute small quantities of surplus spray mixture with plenty of water and spray on fallow land. Dispose of containers in a landfill site approved for pesticides, or burn in a safe place. DO NOT re-use empty containers for any other purpose, especially for food, feed or storing drinking water.

**Leakage and Spillage:**

Remove heavily contaminated soil and bury in a safe place away from water sources. Spillage: soak up with sand, sawdust, soil or an oil-binding agent. Collect all contaminated material and bury in a safe place or put in a waste bin or plastic bag, mark it and dispose of on a landfill site approved for pesticides. Treat spill area with plenty of water.

#### FIRST AID INSTRUCTIONS:

**SKIN CONTACT:** Remove contaminated clothing and thoroughly wash the affected parts of the body with soap and water.

**EYE CONTACT:** Rinse eyes with clean water for several minutes.

If poisoning is suspected, stop work immediately and call a physician. Show label to the physician. If inhaled move to clean fresh air. If swallowed, repeatedly administer medicinal charcoal in plenty of water. Seek medical advice immediately if a large volume of concentrate was ingested.

**Note:** Never give anything orally to an unconscious person and never induce vomiting. If any indisposition occurs stop work immediately and call a physician.

#### TOXICOLOGICAL INFORMATION

**Note to the doctor:** In case of poisoning apply symptomatic therapy.

**Poisoning symptoms:** No case of human poisoning is on record.

**Antidote:** No specific antidote is known; apply symptomatic therapy.

**In case of an emergency Call Toll free No.:** 0800 720 021 / 0800 730 030 (24 hr).

#### NOTICE TO THE USER:

This pest control product is to be used only in accordance with the directions on this label. It is an offence under the Pest Control Products Act to use or store a pest control product under unsafe conditions.

#### WARRANTY:

Seller's guarantee is limited to the terms set out on the label and subject thereto, the buyer assumes the risk to persons or property arising from the use or handling of this product and accepts the product on that condition.

The user bears the risk for damage resulting from factors beyond the manufacturer's control.

**Kiuadudu ya kudhibiti larvae ya diamondback moth (*Plutella xylostella*) kwenye sukuma wiki, Caterpillars (*Spodoptera exigua*) na thrips kwenye maua ya roses.**

#### Inavyofanya kazi:

Wadudu huuwa mara tu wakila majani yaliyonyunyiziwa Match® 050 EC. Wadudu wanaokula majani (caterpillars) pamoja na wale wanaofayanza utomvu wa mimea (thrips) wote huuwa na Match® 050 EC. Wadudu wakila majani imenyunyizwa na Match® 050 EC huuwacha kukula majani na kufayanza utomvu ha hukufaa baada ya siku 3-4.

#### Pendekezo la matumizi:

Match® 050 EC inaweza kutumiwa kwa mimea yote inapendekezwa hapa bila kuharibu mimea.

Match® 050 EC hutumiwa ikichanganywa na maji. Kwa matokeo mazuri zaidi nyunyiza Match® 050 EC mapema saa za asubuhi au saa za jioni.

#### Kiasi cha kutumia:

Mimea	Wadudu	Kiasi (Lita 100 za maji)
Sukuma wiki	Diamondback moth	60-80 ml
Roses	Caterpillars	60-80 ml
	Thrips	2 lt./ha

Ikiwa unatumia bomba la kubeba mgongoni (knapsack) tumia:  
- mililita 25 za Match® 050 EC kwa lita 20 za maji (ukitumia lita 500 za maji).

**Wakati wakungojea kabla ya kuvuna** Mboga: siku 14.

#### Kuchanganya na maji:

Match® 050 EC ni lazima kuchanganywa na maji kabla ya kunyunyizwa. Kwanza weka kiasi cha maji safi kinachohitajika kwenye bomba la kunyunyizia. Halafu ongeza kiasi cha Match® 050 EC kinachopendekezwa na uchanganye dawa na maji sawa sawa. Kila mara changanya dawa na maji mara tu unapotaka kunyunyiza. Changanya tu kiasi cha dawa kitakachoweza kutumiwa na kumalizika siku hiyo.

#### Wakati wa kunyunyiza:

Anza mara tu wadudu wanapoonekana na urudie kila wiki. Nyunyiza dawa wakati usio na jua kali. Saa za asubuhi au jioni huwa nzuri.

Fanya minyungo 2-3 kwa msimu. Anza ukiona watoto wa wadudu 0.5 kwa njani moja ya mboga.

Ikiwa una nyunyiza kwa kua thrips nyunyiza mara mbili kwa vipindi ya siku 4-5.

#### Kiasi cha maji:

Kiasi cha maji kinategemea aina na ukumbwa wa mimea:

Mboga za aina mbali mbali: lita 150-500 kwa hekta.

#### Ukinzani:

Inapendekezwa kufuatana minyunyizo ya Match® 050 EC na ya Pegasus® wakati unanyunyiza kuzuia wadudu wa aina ya caterpillars kama Diamon backmoth.

#### Kuhifadhi:

Hifadhi mahali pakavu mbali na vyakula, watoto na mifugo. Chumba chenye dawa kiwe kikavu na chenye hewa ya kutosha na daima kiwe kimefungwa.

#### Hadhari:

WEKA MBALI NA WATOTO, mifugo na watu wasiohusika nayo.

#### Usalama kwa wanyunyizaji:

Usinywe, usile wala usivute sigara unapotumia Match® 050 EC na kabla ya kufanya hivyo oga mikono na uso. Usivute hewa yenye dawa. Vaa nguo za kazi, yaani ovaro-ji, glavu, buti, kofia, ngao la sura, hasa wakati wa kukoroga na kunyunyiza dawa.

Ukimwagikiwa na dawa mwilini au nguoni, osha mara moja kwa maji safi na sabuni. Baada ya kazi oga mwili wote. Safisha nguo za kazi kabla ya kuzitumia tena.

#### Mazingira na wanyama wa pori:

Match® 050 EC hudhuru nyuki na samaki. Usinyunyize wakati nyuki wanaruka kutavuta chakula. Usimwage dawa ovyo ovyo mtoni au kwenye kisima. Match® 050 EC

haihudhuru ndege. Wanyama wote wasikubaliwe kuingia mahali Match® 050 EC imenyunyizwa na usiokote au kuvuna chakula yoyote ya mifugo mahali imenyunyizwa dawa.

#### Dawa imalizikapo:

Dawa ikisalia imwage kwenye shimo maalum lililotengenezwa kwa kazi hiyo. Viwekeo vyote vya plastiki vichomwe au kufukiwa kwenye mashimo au vifukiwe sehemu nyingine isiyokuwa na maji. Viwekeo vikiisha dawa visitumike kwa shughuli yoyote, hasa kuweka vyakula ama maji ya kunywa.

**Kumwagika na kuvuja dawa:** Udongo uliomwagikiwa dawa uchofwe vizuri na ukazikwe mahali salama mbali na vianzio au njia za maji. Kusanya dawa iliyomwagika kisha ifukie au weka kwenye mfuko wa plastiki na ukazike sehemu iliyo mbali na vianzio vya maji. Iloshe sehemu iliyomwagikia dawa kwa maji mengi.

**Zingatia:** Dawa iliyomwagika isitumike tena.

#### HUDUMA YA KWANZA:

Kama ukijisikia umesumika, acha kazi na uone daktari mara moja. Mgonjwa awakwe mahali penye hewa ya kutosha, mbali na dawa. Kama alimwagikio na dawa, toa nguo na zivuliwe vizuri. Ikiwa dawa imeingia kwenye macho, yasafishwe kwa maji mengi kwa muda wa dakika 15. Mgonjwa anyeshwe makaa maalum ikiwa amemeza dawa. Mtu aliyezirai asilishwe chochote. PELEKA MJERUHI KWA DAKTARI.

#### Kinga:

Hakuna kinga maalum. Matibabu ni vile atavyoona daktari.

#### Kukiwa na jambo la dharura piga simu isiotozwa Nambari:

00800 720 021 / 0800 730 030 (masaa 24).

#### ILANI KWA MTUMIAJI:

Dawa hii ni sharti itumiwe kulingana na maagizo yaliyo kwenye kibandiko. Ni hatia chini ya sheria za madawa ya kuangamiza wadudu waharibifu kutumia au kuhifadhi dawa hii katika hali isiyo salama.

**THIBITISHO:**

Dhamana ya muuzaji ni maelezo yaliyo kwenye kabandiko ambayo ni lazima yafuatwe kikamilifu. Mnunuzi lazima akubali hatari zozote zinazoweza kutokana na matumizi ya dawa hii kwa binadamu au mali na lazima aikubali dawa hii katika hali hiyo.

OR REMOVED AS NECESSARY  
TO CREATE A 4, 8, 12, OR 16 PAGE BOOKLET  
(INCLUDING GLUE PAGE)

TEXT AREA  
214 x 115 mm

THE PENULTIMATE PAGE IS PERMANENTLY AFFIXED TO THE BOTTLE,  
REPEAT LEGAL REQUIREMENTS IF NECESSARY (eg. FRONT PAGE)

COMMERCIAL AND AGRICULTURAL CLASS.  
READ LABEL AND ATTACHED  
PACKAGING LEAFLET BEFORE USING.

KEEP LOCKED OUT  
OF REACH OF CHILDREN.  
WEKA MBALI NA WATOTO.

KUNDI LA BIASHARA NA KILIMO.  
SOMA MAELEZO YOTE KWENYE FURUSI NA  
UKURUSA ULIOBANDIKWA  
KWA FURUSI.

**Shelf Life:** 2 years from date of manufacture in original unopened containers, stored in a cool dry place.

**Maisha rafuni:** miaka miwili kuanzia siku ya kutengenezwa ikiwa imehifadhiwa, katika viwekeo vyake asili ambavyo havijafunguliwa.

**In case of an emergency Call Toll free No.:** 0800 720 021 / 0800 730 030 (24 hr).

**Kukiwa na jambo la dharura piga simu isio-  
tozwa nambari:** 0800 720 021 / 0800 730 030  
(masaa 24).

® Registered Trademark  
of a Syngenta Group Company  
® Alama ya biashara ya kampuni ya Syngenta

**Manufacturer: / Watengenezaji:**  
Syngenta Crop Protection AG  
Basle, Switzerland

**Distributor: / Wauzaji:**  
**Syngenta East Africa Ltd.**  
P.O. Box 30393  
00100 Nairobi, Kenya  
Tel.: 254-0703018000/9000  
Fax: 254-020-3007885



**Match® 050EC**

syngenta.



**Insecticide for the control of  
diamondback moth larvae (*Plu-  
tella xylostella*) on kales, Cater-  
pillars (*Spodoptera exigua*) and  
Thrips on Roses.**

**Kiuadudu ya kudhibiti larvae ya diamond-  
back moth (*Plutella xylostella*) kwenye suku-  
ma wiki, Caterpillars (*Spodoptera exigua*) na  
thrips kwenye maua ya roses.**

**FLAMMABLE  
HUSHIKA MOTO**



**Guarantee: / Dhamana:** Lufenuron 50 g/lit.

**REGISTRATION NO. / NAMBARI YA KUSAJI-  
LIWA: PCPB(CR) 0269**

**Net Content: 1 Litre  
Ujazo: Lita 1**

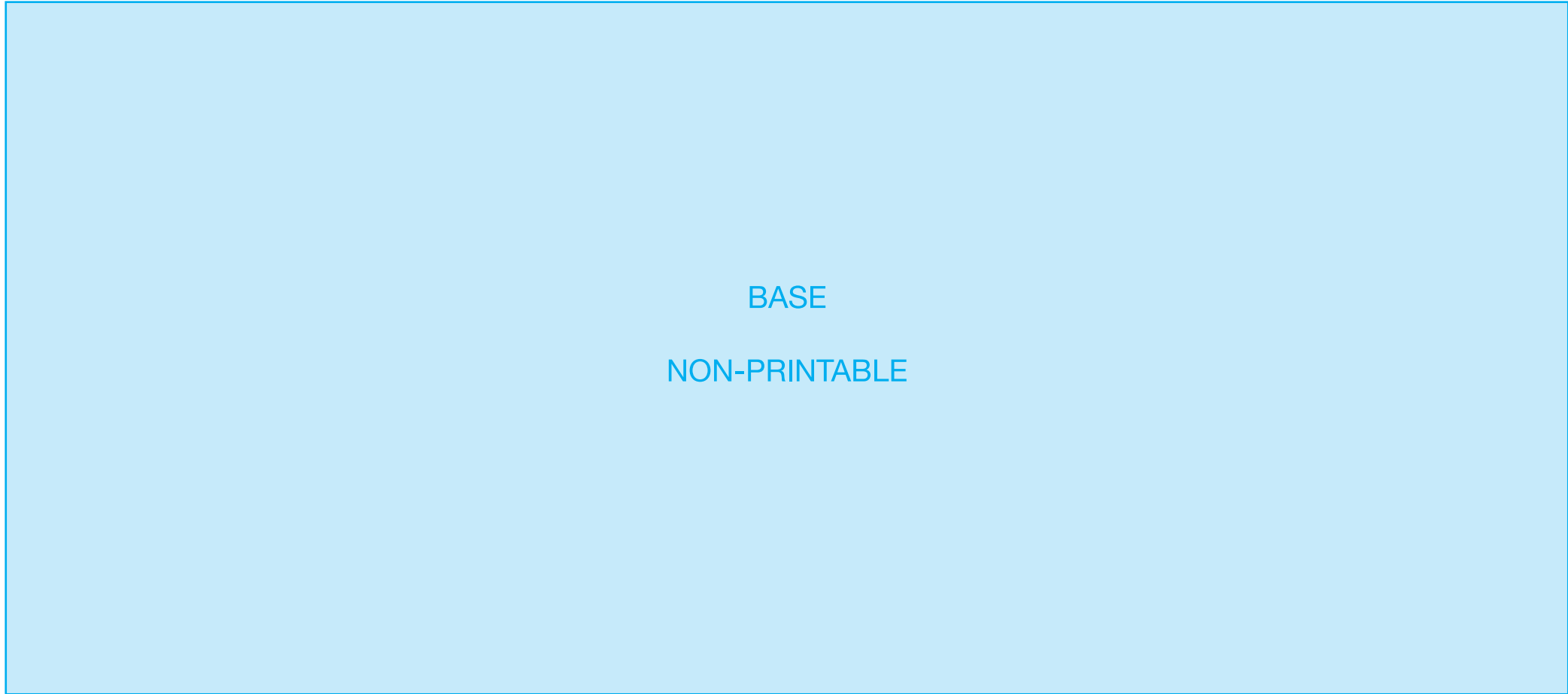
Product names marked ® or TM, the ALLIANCE FRAME  
the SYNGENTA Logo and the PURPOSE ICON  
are Trademarks of a Syngenta Group Company



NO TEXT HERE

GLUE PAGE

PAGE NUMBER SEQUENCING IS DETERMINED BY THE FINAL LEADING EDGE.  
RIGHT HAND STARTS FROM BACK OF BOOKLET. LEFT HAND STARTS FROM FRONT OF BOOKLET.  
FIRST (FRONT) PAGE IS ALWAYS FIXED ON TOP OF BOOKLET.



BASE  
NON-PRINTABLE

Please remove before printing.  
Retirez s'il vous plaît avant l'impression  
Por favor, eliminar antes de imprimir.